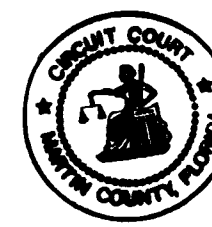


THE COMMONS AT INDIAN STREET

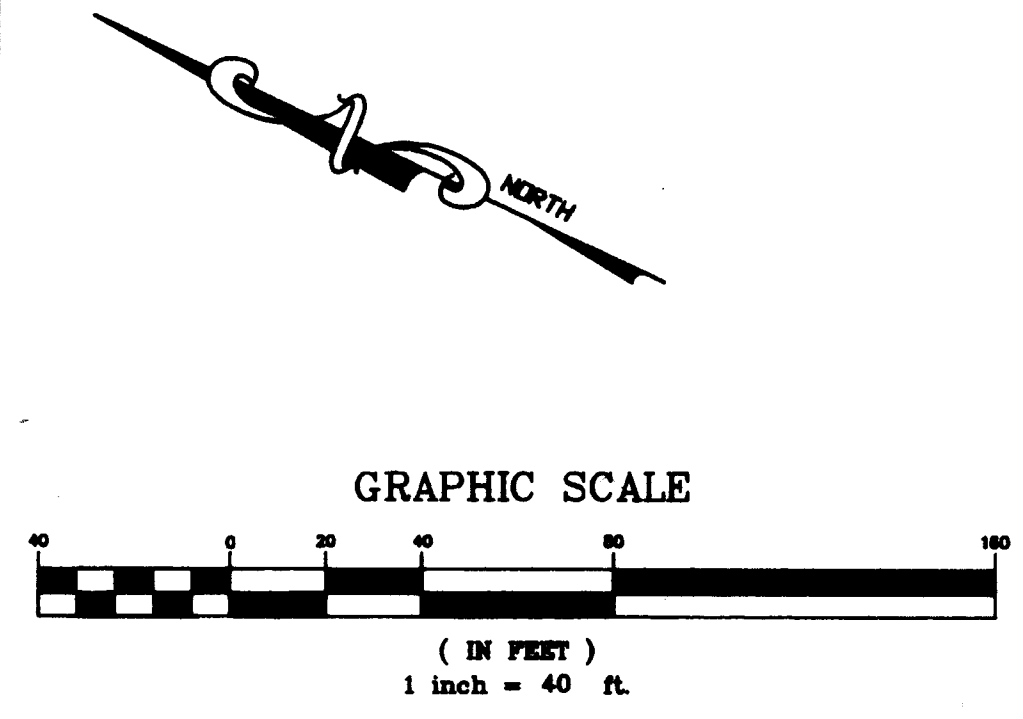
BEING A REPLAT OF TRACT 46, PORT SEWALL, SEWALL'S
POINT LAND COMPANY, PLAT BOOK 3, PAGE 7, PALM
BEACH (NOW MARTIN) COUNTY, FLORIDA.
CITY OF STUART, MARTIN COUNTY, FLORIDA.

SHEET 2 OF 2

CLERK'S RECORDING CERTIFICATE:
I, CAROLYN TIMMANN, CLERK OF THE CIRCUIT COURT OF MARTIN COUNTY, FLORIDA, HEREBY CERTIFY THAT THIS PLAT WAS FILED FOR RECORD IN PLAT BOOK 17, PAGE 20, MARTIN COUNTY, FLORIDA, PUBLIC RECORDS, THIS 21ST DAY OF AUGUST, 2014.

CAROLYN TIMMANN, CLERK
CIRCUIT COURT
MARTIN COUNTY, FLORIDA

BY: Sue Kimball, DC
DEPUTY CLERK (CIRCUIT COURT SEAL)

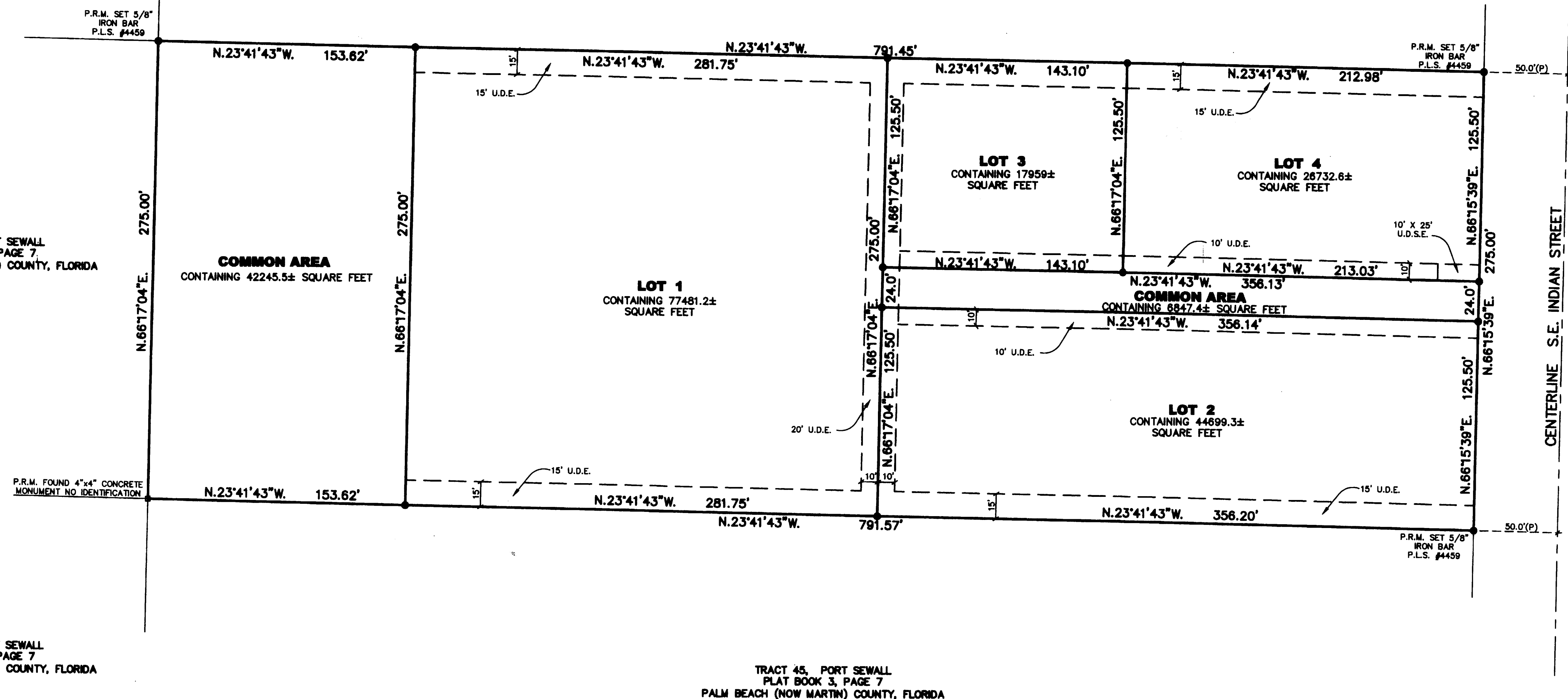
FILE NO. 2412043
SUBDIVISION PARCEL CONTROL NUMBER: _____



TRACT 38, PORT SEWALL
PLAT BOOK 3, PAGE 7
PALM BEACH (NOW MARTIN) COUNTY, FLORIDA

TRACT 47, PORT SEWALL
PLAT BOOK 3, PAGE 7
PALM BEACH (NOW MARTIN) COUNTY, FLORIDA

TRACT 39, PORT SEWALL
PLAT BOOK 3, PAGE 7
PALM BEACH (NOW MARTIN) COUNTY, FLORIDA



- SURVEYOR'S NOTES:**
1. THIS PLAT, AS RECORDED IN ITS GRAPHIC FORM, IS THE OFFICIAL DEPICTION OF THE SUBDIVIDED LANDS DESCRIBED HEREIN AND WILL IN NO CIRCUMSTANCES BE SUPPLANTED IN AUTHORITY BY ANY OTHER GRAPHICAL OR DIGITAL FORM OF PLAT.
 2. THERE MAY BE ADDITIONAL RESTRICTIONS THAT ARE NOT RECORDED ON THIS PLAT THAT MAY BE FOUND IN THE PUBLIC RECORDS OF THIS COUNTY.
 3. THERE SHALL BE NO BUILDING OR ANY OTHER KIND OF CONSTRUCTION, OR PLACEMENT OF TREES OR SHRUBS ON UTILITY AND DRAINAGE EASEMENTS.
 4. BEARINGS SHOWN HEREON ARE REFERENCED TO THE NORTHERLY RIGHT OF WAY LINE OF S.E. INDIAN STREET. SAID LINE BEARS NORTH 66°15'39" EAST.
 5. THIS PROPERTY IS LOCATED IN FLOOD ZONE 'X' ACCORDING TO THE FLOOD INSURANCE RATE MAP (FIRM) NO. 12085C-0163-F, (COMMUNITY NO. 120161), DATED: OCTOBER 4, 2002.
 6. COORDINATES SYSTEM BASED ON FLORIDA STATE PLANE COORDINATE EAST ZONE SYSTEM, NAD 83/90 AS ADJUSTED, GCY D14 (N 1030959.916 / E 907152.343) AND GCY D15 (N 1023356.801 / E 911406.678)

LEGEND
P.R.M. - PERMANENT REFERENCE MONUMENT
P.L.S. - PROFESSIONAL LAND SURVEYOR
U.D.S.E. - UTILITY, DRAINAGE & SIGNAGE EASEMENT
U.D.E. - UTILITY & DRAINAGE EASEMENT
● - INDICATES SET 5/8" IRON ROD & CAP P.L.S. 4459

SEAL SEAL SEAL

ACCURIGHT LAND SURVEYING, INC.
1501 DECKER AVENUE #4190, STUART, FL., 34994
OFFICE PHONE NO. (772) 286-7694 FAX NO. (772) 220-7993
LICENSED BUSINESS NO. 6807
SHEET 2 OF 2